

## “PRactice Oriented Master programmes in ENGINEERING”

*in RU, UA and UZ*



Coördinator & contact :

Ing. Peter Arras

*International Relations Officer*

Campus De Nayer

J. De Nayerlaan, 5

B 2860 St-Katelijne Waver

BELGIUM

[peter.arras@mechelen.lessius.eu](mailto:peter.arras@mechelen.lessius.eu)

Representatives :



*André Voet*

Head Research group  
Design & Production



*Jef de Jonge*

Lecturer  
Control engineering & Materials



- Member of **K.U. Leuven Association**
- **Internationally** oriented university college  
Student and teacher mobility
- Location ...



# Lessius

## Location



Belgium

*heart of Europe*





# Lessius

Multi-campus

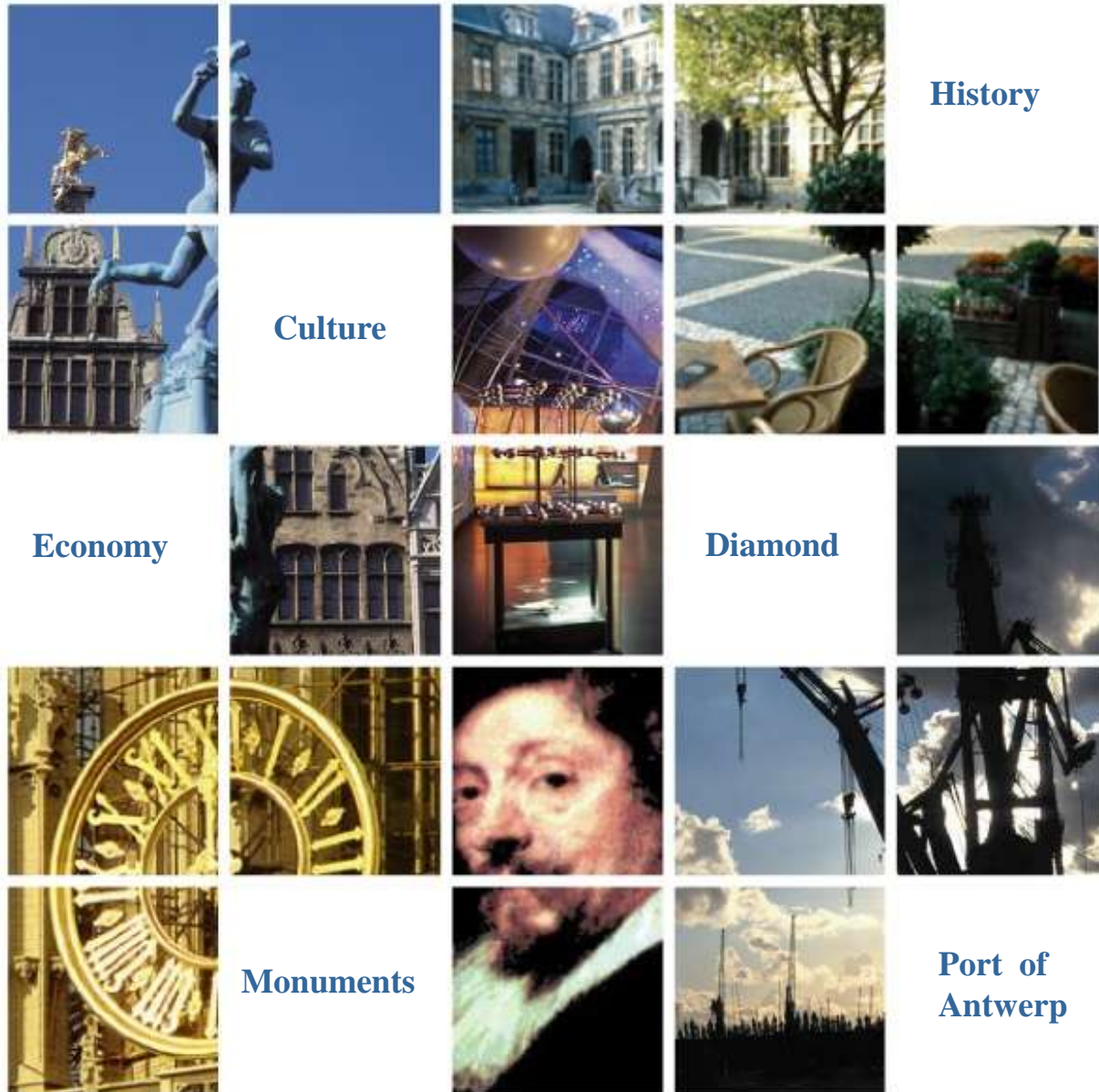


Lessius University college

Engineering – Technology  
at *St-Katelijne Waver*

CAMPUS  
DE NAYER





History

Culture

Economy

Diamond

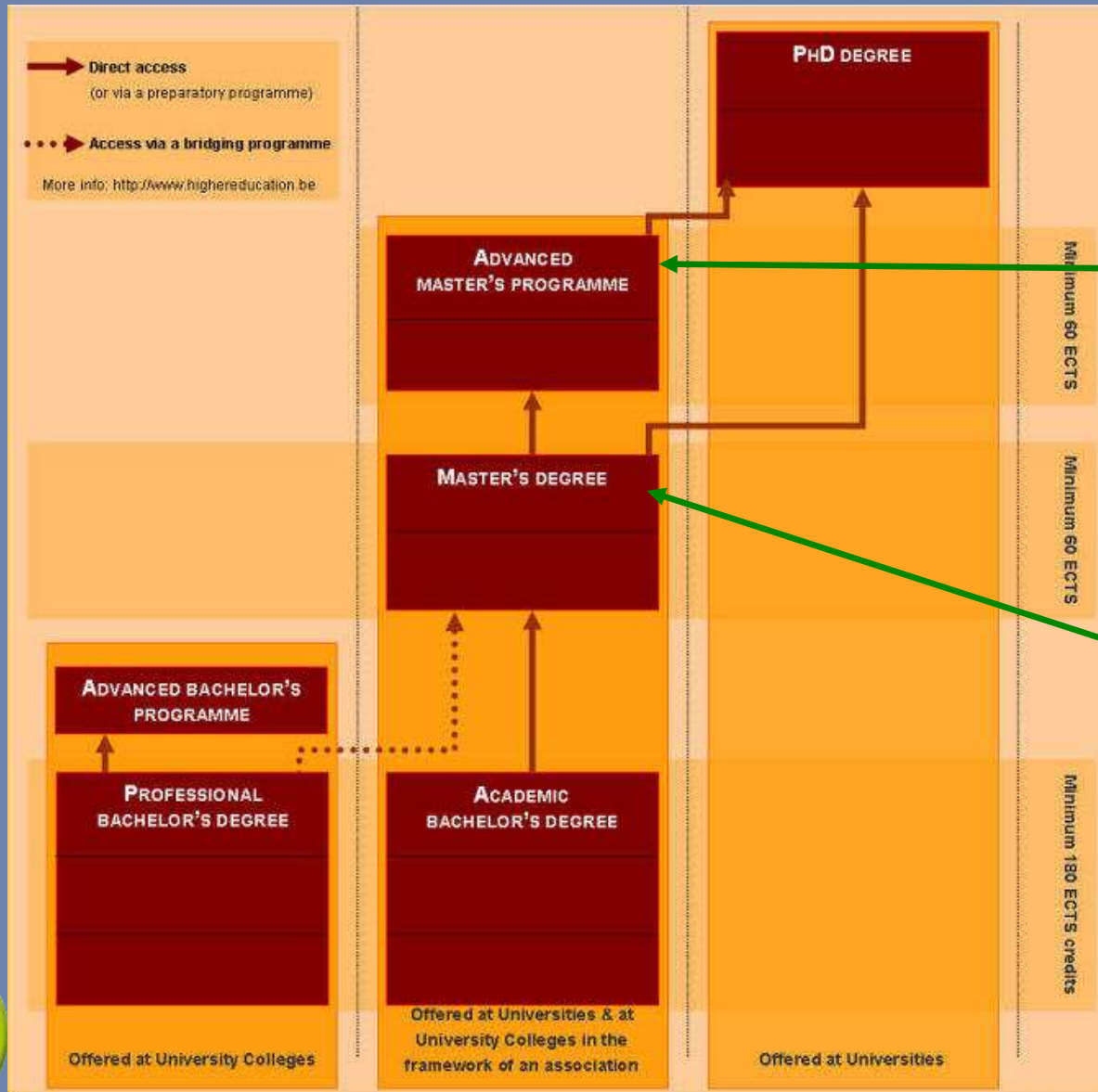
Monuments

Port of  
Antwerp



- **8** Campuses
- **8** Departments
- **11** Master Programmes
- **23** Bachelor Programmes
- + **10.000** Students & + 1.100 employés
- + **150** Bilateral agreements
- + **200** exchange students/year
- **8** Centres of expertise & research
- **7** Programmes in English





Welding engineer

- Electro mechanics
- Construction
- (Bio)Chemistry
- Electronics - ICT





### Programmes

- Construction Engineering
- Electro-Mechanical Engineering
- Biochemical Engineering
- Chemical Engineering
- Engineering in Electronics-ICT
- Engineering in Electro-technology
- Land Surveying
- Welding Engineering (2<sup>nd</sup> Ma)
- Sustainable Engineering (English)

### Research

- Embedded systems
- Design and production
- Waste water treatment
- Renewable energy systems

Applied research: technology transfer

- Sponsored by government and industry
- Implementations in SMEs (Small & Medium sized enterprises) of new technologies

Knowledge centers:

- Powder technology (VCPT)
- Sustainable energy (Thermac, Ideg)
- Biochemistry
- Micro welding
- Additive manufacturing

Accredited test labs for materials and EMC

10.000 m<sup>2</sup> of laboratories







### ■ Programmes

- Automotive Technology
- Electro-Mechanics
- Electronics - ICT
- Mechanical Design and Production Technology
- Interior design and architecture

### ■ Research

- Embedded hard- and software
- Multi-core technology
- Automotive technology
- Industrial automation



Student mobility : *study and projects*

Teacher mobility : *teaching and exchange*

International partner in projects

Research & international congresses

### Input of our department Engineering and Technology:

- \* Course development



- \* Installation of CAD-laboratories for MCAD and ECAD



- \* Student mobility

